



HDC | HDC HE

TE Internal #: T2040323201-000

Rectangular Contact Inserts, HE, Socket, 16, Spring Terminal, 16 Position, 14 – 20 AWG Wire Size, .5 – 2.5 mm² Wire Size, Power & Signal, HDC HE

[View on TE.com >](#)

Connectors > Rectangular Connectors > Rectangular Contact Inserts



Rectangular Connector Insert Type: **HE**

Contact Type: **Socket**

Contact Insert Pole Configuration: **16**

Termination Method to Wire & Cable: **Spring Terminal**

Number of Positions: **16**

Features

Product Type Features

Product Type	Insert
Rectangular Connector Insert Type	HE
Sealable	No

Configuration Features

Number of Positions	16
---------------------	----

Contact Features

Contact Type	Socket
Contact Insert Pole Configuration	16

Termination Features

Termination Method to Wire & Cable	Spring Terminal
------------------------------------	-----------------

Dimensions

Wire Size	.5 – 2.5 mm ²
-----------	--------------------------

Operation/Application

Circuit Application	Power & Signal
---------------------	----------------

Product Compliance

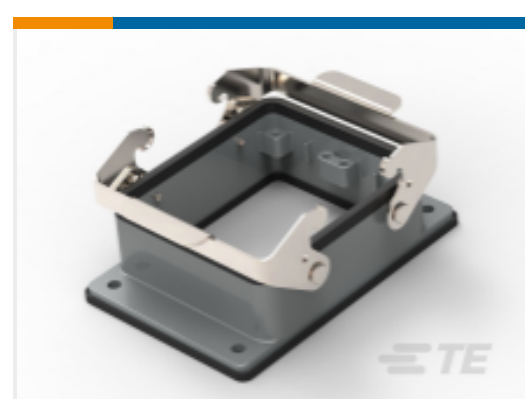
[For compliance documentation, visit the product page on TE.com>](#)

EU RoHS Directive 2011/65/EU	Compliant with Exemptions
EU ELV Directive 2000/53/EC	Compliant with Exemptions
China RoHS 2 Directive MIIT Order No 32, 2016	Restricted Materials Above Threshold
EU REACH Regulation (EC) No. 1907/2006	Current ECHA Candidate List: JUNE 2022 (224) Candidate List Declared Against: JUNE 2022 (224) SVHC > Threshold: Pb (1.9% in Component Part) Article Safe Usage Statements: Do not eat, drink or smoke when using this product. Wash thoroughly after handling. Recycle if possible and dispose of the article by following all applicable governmental regulations relevant to your geographic location.
Halogen Content	Not Low Halogen - contains Br or Cl > 900 ppm.
Solder Process Capability	Not reviewed for solder process capability

Product Compliance Disclaimer

This information is provided based on reasonable inquiry of our suppliers and represents our current actual knowledge based on the information they provided. This information is subject to change. The part numbers that TE has identified as EU RoHS compliant have a maximum concentration of 0.1% by weight in homogenous materials for lead, hexavalent chromium, mercury, PBB, PBDE, DBP, BBP, DEHP, DIBP, and 0.01% for cadmium, or qualify for an exemption to these limits as defined in the Annexes of Directive 2011/65/EU (RoHS2). Finished electrical and electronic equipment products will be CE marked as required by Directive 2011/65/EU. Components may not be CE marked. Additionally, the part numbers that TE has identified as EU ELV compliant have a maximum concentration of 0.1% by weight in homogenous materials for lead, hexavalent chromium, and mercury, and 0.01% for cadmium, or qualify for an exemption to these limits as defined in the Annexes of Directive 2000/53/EC (ELV). Regarding the REACH Regulation, the information TE provides on SVHC in articles for this part number is based on the latest European Chemicals Agency (ECHA) 'Guidance on requirements for substances in articles' posted at this URL: <https://echa.europa.eu/guidance-documents/guidance-on-reach>

Compatible Parts



TE Part # T1410322000-000
H32B-AG



TE Part # T2040323101-000
HE-016-MS 17-32

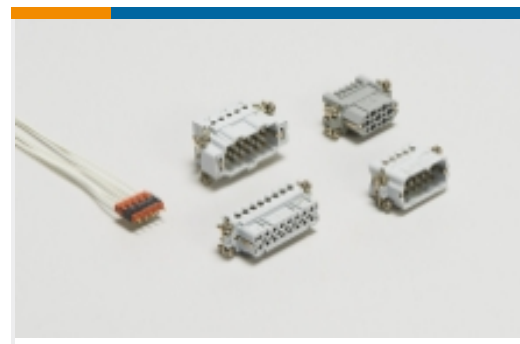


TE Part # T1000321320-000
H32B-KDBP-BOM

Also in the Series | **HDC HE**



Connector Contacts(32)



Rectangular Contact Inserts(127)

Documents

Product Drawings

[HE-016-FS 17-32](#)

English

CAD Files

[3D PDF](#)

3D

Customer View Model

[ENG_CVM_CVM_T2040323201-000_B.2d_dxf.zip](#)

English

Customer View Model

[ENG_CVM_CVM_T2040323201-000_B.3d_igs.zip](#)

English

Customer View Model

[ENG_CVM_CVM_T2040323201-000_B.3d_stp.zip](#)

English

By downloading the CAD file I accept and agree to the [Terms and Conditions](#) of use.

Datasheets & Catalog Pages

[Heavy Duty Connectors](#)

English

[HEAVY DUTY CONNECTORS](#)

English

Product Specifications

[Application Specification](#)

English

[Application Specification](#)

Agency Approvals

[Agency Approval Document](#)

English